



中国认可  
国际互认  
检测  
**TESTING**  
**CNAS L0095**

Page 1 of 14 Pages  
No.: RZUN2017-1575

# 检测报告

## TEST REPORT

**UN38.3**

NAME OF SAMPLE:  
产品名称:

LiFePO<sub>4</sub> battery  
磷酸铁锂电池

CLIENT:  
委托单位:

Wisdom Industrial Power Co.,Ltd  
威盛工业电源有限公司

CLASSIFICATION OF TEST:  
检测类别:

Commission Test  
委托测试

威凯检测技术有限公司  
**Vkan Certification & Testing Co., Ltd.**




# 检测报告

## TEST REPORT

No.:RZUN2017-1575

Page 2 of 14 Pages

Name of samples: LiFePO4 battery 样品名称:磷酸铁锂电池	Type/Model: 型号规格: B-LFP12-100 12.8V 100Ah 1280Wh
Appearance: blue 样品外观颜色:蓝色	Trade mark: 商标: BSLBATT
Commissioned by: Wisdom Industrial Power Co.,Ltd 委托单位: 威盛工业电源有限公司	Manufacturer: Huizhou Wisdom Power Technology Co., Ltd. 生产单位: 惠州威斯顿电源科技有限公司
Commissioner address:UNIT 04,7/F, BRIGHT WAY TOWER, 33 MONG KOK RD, KL, HONG KONG 委托单位地址:香港九龙旺角道 33 号凯途发展大厦 7 楼 04 室	Manufacturer address:E-Commerce Industrial Park, Huizhou Ave, Huichen, Huizhou city, Guandong 生产单位地址: 广东省惠州市惠城区电子商务产业园
Classification of test: Commission Test 检测类别: 委托测试	Quantity of sample: 4 battery packs, 25 cells 样品数量: 4 个电池组, 25 个电芯
Tested according to: 测试标准: ST/SG/AC.10/11/Rev.6/Section 38.3	Sample identification: 样品标识序号:b1#~b4#, c1#~c25#
Receiving date: 接样日期: 2017-06-09	Means of receiving: Submitted by commissioner 接样方式: 委托单位送样
Completing date: 完成日期: 2017-06-30	Test item: 8 items 测试项目: 8 项
<p>Test conclusion: 检测结论:</p> <p>The LiFePO4 batteries submitted by Wisdom Industrial Power Co.,Ltd are tested according to Section 38.3 of the sixth Revised Edition of the Recommendations on the Transport of Dangerous Goods, Manual of Test and Criteria (ST/SG/AC.10/11/Rev.6/Section 38.3). The test items are full items. The test results comply with the relevant requirements of the standard.</p> <p>由威盛工业电源有限公司送检的磷酸铁锂电池, 依据《关于危险品货物运输的建议书》试验和标准手册第六修订版第 38.3 节进行检测, 试验为全项目, 测试结果符合标准相关要求。</p> <div style="text-align: center;">  <p>Seal of CVC CVC 印章 Date of issue: 签发日期:2017.07.03</p> </div>	

Approved by:

批准:



Reviewed by:

审核:

  
\_\_\_\_\_

Tested by:

检测:

  
\_\_\_\_\_

## Description and illustration of the sample:

样品说明及描述:

The sample's status is good

样品状况良好。

Test item 测试项目	Sample No. 样品编号	State 状态	Remark 备注
T.1~T.5	b1#~b2#	at first cycle, in fully charged state 第一个交替充电放电周期完全充电状态	-
	b3#~b4#	at fifty cycle, in fully charged state 第五十个交替充电放电周期完全充电状态	
T.6	c1#~c5#	at first cycle at 50% of the design rated capacity 第一个交替充电放电周期充电到设计额定容量的 50%	-
T.7	b1#~b2#	at first cycle, in fully charged state 第一个交替充电放电周期完全充电状态	using undamaged samples previously used in tests T.1 to T.5 使用试验 T.1 至 T.5 未损坏的样品
	b3#~b4#	at fifty cycle, in fully charged state 第五十个交替充电放电周期完全充电状态	
T.8	c6#~c15#	at first cycle, in fully discharged state 第一个交替充电放电周期完全放电状态	-
	c16#~c25#	after fifty cycles ending in fully discharged state 第五十个交替充电放电周期完全放电状态	-

## Description of the sampling procedure:

取样程序的说明:

/

## Description of the deviation from the standard, if any:

测试结果不符合标准项的说明:

/

## Remarks:

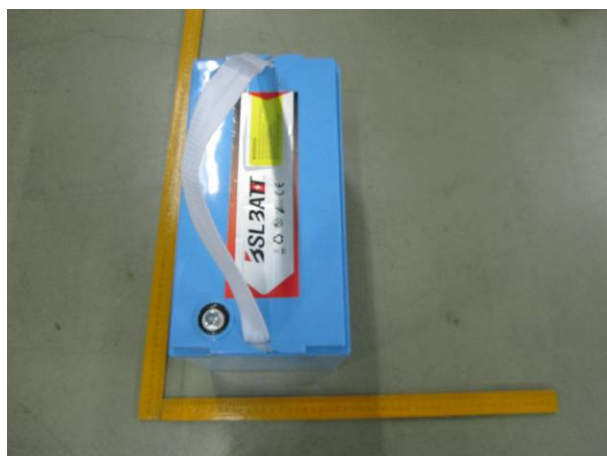
备注:

Throughout this report a comma is used as the decimal separator.

本报告中以逗号代替小数点。

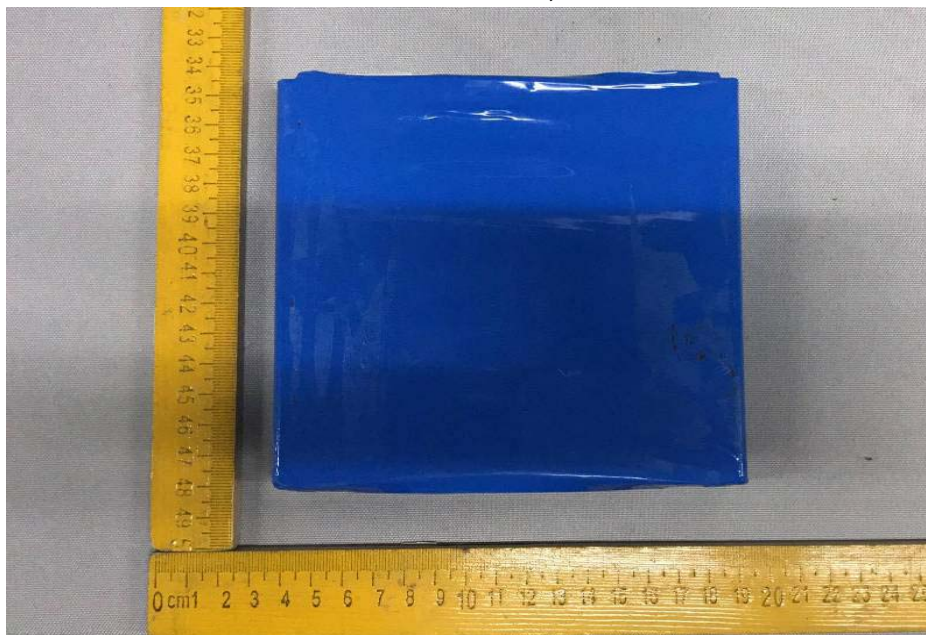
## Photos of Samples and Labels/样品照片及标识

Battery/电池 (B-LFP12-100 12,8V 100Ah 1280Wh)



## Photos of Samples and Labels/样品照片及标识

Inner Cell/内部电芯 (3.2V 40Ah )



ST/SG/AC.10/11/Rev.6/Section 38.3

Clause 章节	Requirements 标准要求	Result 测试结果	Verdict 判定
38.3.4	Procedure/测试步骤		—
38.3.4.1	Test 1: Altitude simulation/测试 1: 高度模拟		P
	Test cells and batteries shall be stored at a pressure of 11,6kPa or less for at least six hour at ambient temperature (20±5℃)/ 将电芯和电池在温度为 20±5℃，大气压力为不大于 11,6kpa 的环境中贮存不少于 6 个小时		
	Requirement/标准要求: 1 Cells and batteries Mass loss limit: ≤0,1% /样品质量损失 ≤0,1% 2 Open circuit voltage not less than 90%, The requirement relating to voltage is not applicable to test cells and batteries at full discharged states. 样品试验后开路电压应不低于试验前开路电压的 90 %,此要求不适用于完全放完电的电池和电芯。 3 No leakage, no venting, no disassembly, no rupture and no fire 样品（电池）应无漏液、无排气、无解体、无破裂以及无着火现象的发生	The samples b1#~b4# :  No leakage, no venting, no disassembly, no rupture and no fire/ 编号为 b1#~b4#的样品：无漏液、无排气、无解体、无破裂以及无着火现象  The data see table1/数据见表 1	
38.3.4.2	Test 2: Thermal test/测试 2: 热冲击		P
	Test cells and batteries are to be stored for/电池存储条件如下：  1 one temperature cycle: 72±2℃(6h) —40±2℃(6h) /一次温度循环为 72±2℃(6h) —40±2℃(6h)  2 The maximum time interval between test temperature extremes is 30 minutes/温度转换最大间隔时间为 30min  3 This procedure is to be repeated 10 times/重复 10 次循环  4 after which all test cells and batteries are to be stored for 24 hours at ambient temperature (20±5℃)/循环结束后，电池在 20±5℃的条件下 搁置 24 小时.		
	Requirements/标准要求 1 Cells and batteries Mass loss limit: ≤0,1% /样品质量损失 ≤0,1% 2 Open circuit voltage not less than 90%, The requirement relating to voltage is not applicable to test cells and batteries at full discharged states. 样品试验后开路电压应不低于试验前开路电压的 90 %,此要求不适用于完全放完电的电池和电芯。 3 No leakage, no venting, no disassembly, no rupture and no fire 样品（电池）应无漏液、无排气、无解体、无破裂以及无着火现象的发生	The samples b1#~b4# :  No leakage, no venting, no disassembly, no rupture and no fire/ 编号为 b1#~b4#的样品：无漏液、无排气、无解体、无破裂以及无着火现象  The data see table1/数据见表 1	

ST/SG/AC.10/11/Rev.6/Section 38.3			
Clause 章节	Requirements 标准要求	Result 测试结果	Verdict 判定
38.3.4.3	<b>Test 3: Vibration/测试 3: 振动</b>  1 Cells and batteries are firmly secured to the platform of the vibration machine /电芯和电池牢固地安装在振动台（的台面）上  2 The vibration :a sinusoidal waveform with a logarithmic sweep between 7 Hz and 200 Hz and back to 7 Hz traversed in 15 minutes/振动以正弦波形式，以 7Hz 增加至 200Hz，然后在减少回到 7Hz 为一个循环，一个循环持续 15 分钟的对数前移传送。  3 the logarithmic frequency sweep is as follows: from 7 Hz a peak acceleration of 1 gn is maintained until 18 Hz is reached, The amplitude is then maintained at 0,8 mm (1,6 mm total excursion) and the frequency increased until a peak acceleration of 8 gn occurs (approximately 50Hz), A peak acceleration of 8 gn is then maintained until the frequency is increased to 200 Hz/对数扫频为:从 7 赫兹开始保持 1gn 的最大加速度直到频率为 18 赫兹，然后将振幅保持在 0,8 毫米（总偏移 1,6 毫米）并增加频率直到最大加速度达到 8gn（频率约为 50 赫兹），将最大加速度保持在 8gn 直到频率增加到 200 赫兹。  4This cycle repeated 12 times for a total of 3 hours for each of three mutually perpendicular mounting position of the cell. One of the directions of vibration must be perpendicular to the terminal face. /以振动的其中一个方向必须是垂直样品极性，对每个电芯从三个互相垂直的方向上循环 12 次，每个方向 3 个小时，共 9 小时。		P
	<b>Requirements/标准要求</b> 1 Cells and batteries Mass loss limit: ≤0,1% /样品质量损失 ≤0,1% 2 Open circuit voltage not less than 90%, The requirement relating to voltage is not applicable to test cells and batteries at full discharged states. 样品试验后开路电压应不低于试验前开路电压的 90%，此要求不适用于完全放完电的电池和电芯。 3 No leakage, no venting, no disassembly, no rupture and no fire 样品（电池）应无漏液、无排气、无解体、无破裂以及无着火现象的发生	The samples b1#~b4#: No leakage, no venting, no disassembly, no rupture and no fire/ 编号为 b1#~b4#的样品：无漏液、无排气、无解体、无破裂以及无着火现象  The data see table1/数据见表 1	



ST/SG/AC.10/11/Rev.6/Section 38.3			
Clause 章节	Requirements 标准要求	Result 测试结果	Verdict 判定
38.3.4.4	<p><b>Test 4: Shock/测试 4: 冲击</b></p> <p>1 Test cells and batteries shall be secured to the testing machine/以稳固的托架固定住每个电芯和电池样品的全部配件表面。</p> <p>2 Each cell shall be subjected to a half-sine shock of peak acceleration of 150 g<sub>n</sub> and pulse duration of 6 milliseconds. Large cells may be subjected to a half-sine shock of peak acceleration of 50 g<sub>n</sub> and pulse duration of 11 milliseconds. / 对每个电芯以峰值为 150g<sub>n</sub> 的半正弦的加速度撞击, 脉冲持续 6 毫秒, 大型电芯须经受最大加速度 50g<sub>n</sub> 和脉冲持续时间 11 毫秒的半正弦波冲击。</p> <p>Small batteries shall be subjected to a half-sine shock of peak acceleration of 150 g<sub>n</sub> (or Acceleration(g<sub>n</sub>)=<math>\sqrt{\left(\frac{100850}{mass}\right)}</math>, which is smaller) and pulse duration of 6 milliseconds, large batteries shall be subjected to a half-sine of peak acceleration of 50 g<sub>n</sub> (or Acceleration(g<sub>n</sub>)=<math>\sqrt{\left(\frac{30000}{mass}\right)}</math>, which is smaller) and pulse duration of 11 milliseconds/对每个电池以峰值为 150g<sub>n</sub> (或与 <math>\sqrt{\left(\frac{100850}{mass}\right)}</math> 中的较小值) 的半正弦的加速度撞击, 脉冲持续 6 毫秒, 大型电池组须经受最大加速度 50g<sub>n</sub> (或与 <math>\sqrt{\left(\frac{30000}{mass}\right)}</math> 中的较小值) 和脉冲持续时间 11 毫秒的半正弦波冲击。</p> <p>3 Each cell or battery shall be subjected to three shocks in the positive direction followed by three shocks in the negative direction of three mutually perpendicular mounting positions of the cell or battery for a total of 18 shocks/每个电池或电池组须在三个互相垂直的电池安装方位的正方向经受三次冲击, 接着在反方向经受三次冲击, 总共经受 18 次冲击。</p>		P
	<p>Requirements/标准要求:</p> <p>1 Cells and batteries Mass loss limit: ≤0,1% /样品质量损失 ≤0,1%</p> <p>2 Open circuit voltage not less than 90%, The requirement relating to voltage is not applicable to test cells and batteries at full discharged states. 样品试验后开路电压应不低于试验前开路电压的 90%,此要求不适用于完全放完电的电池和电芯。</p> <p>3 No leakage, no venting, no disassembly, no rupture and no fire 样品(电池)应无漏液、无排气、无解体、无破裂以及无着火现象的发生</p>	<p>The samples b1#~b4# :</p> <p>Acceleration= 41g<sub>n</sub></p> <p>No leakage, no venting, no disassembly, no rupture and no fire/ 编号为 b1#~b4#的样品:</p> <p>峰值加速度= 41g<sub>n</sub> 无漏液、无排气、无解体、无破裂以及无着火现象</p> <p>The data see table1/数据见表 1</p>	





ST/SG/AC.10/11/Rev.6/Section 38.3			
Clause 章节	Requirements 标准要求	Result 测试结果	Verdict 判定
38.3.4.6	<b>Test 6: Impact / Crush / 测试 6: 撞击/挤压</b> Impact (applicable to cylindrical cells not less than 18mm in diameter) / 撞击（适用于直径不小于 18 毫米的圆柱形电池）		P
	1 This test sample cell or component cell is to be placed on a flat smooth surface/ 将试验样品用的电芯或聚合物电芯放在一个平坦光滑的平面上 2 A 15,8 mm diameter bar is to be placed across the center of the sample, A 9,1kg mass is to be dropped from a height of 61±2,5cm onto the sample./将一直径为 15,8mm 的横木横过电池中部放置后，将一质量为 9,1kg 的物体从 61±2,5cm 的高度落向样品。 3 The test sample is to be impacted with its longitudinal axis parallel to the flat surface and perpendicular to the longitudinal axis of the 15,8 mm ± 0,1mm diameter curved surface lying across the centre of the test sample. Each sample is to be subjected to only a single impact./ 接受撞击的试样，纵轴应与平坦的表面平行并与横放在试样中心的直径 15,8±0,1 毫米弯曲表面的纵轴垂直。每一个试样只经受一次撞击。		N/A
	<b>Requirements/标准要求:</b> 1 Cells external temperature not exceed 170°C.电芯或电池的最高表面温度应不超过 170°C 2 No disassembly, no fire within six hours of this test 试验结束后 6 个小时之内，电芯和聚合物电芯应无解体和无着火现象发生	-	
	<b>Crush (applicable to prismatic, pouch, coin/button cells and cylindrical cells less than 18mm in diameter)</b> <b>/ 挤压（适用于棱柱形、袋装、硬币/纽扣电池和直径小于 18 毫米的圆柱形电池）</b> 1 A cell or component cell is to be crushed between two flat surfaces. The crushing is to be gradual with a speed of approximately 1,5 cm/s at the first point of contact. The crushing is to be continued until the first of the three options below is reached. / 将电池或元件电池放在两个平面之间挤压，挤压力度逐渐加大，在第一个接触点上的速度大约为 1,5 厘米/秒。挤压持续进行，直到出现以下三种情况之一： (a) The applied force reaches 13 kN ± 0,78 kN. / 施加的力达到 13 千牛±0,78 千牛 (b) The voltage of the cell drops by at least 100 mV,/电池的电压下降至少 100 毫伏 (c) The cell is deformed by 50% or more of its original thickness./电池变形达原始厚度的 50%以上。 2. A prismatic or pouch cell shall be crushed by applying the force to the widest side. A button/coin cell shall be crushed by applying the force on its flat surfaces. For cylindrical cells, the crush force shall be applied perpendicular to the longitudinal axis. /棱柱形或袋装电池应从最宽的一面施压。纽扣/硬币形电池应从其平坦表面施压。圆柱形应从与纵轴垂直的方向施压。		P
	<b>Requirements/标准要求:</b> 1 Cells external temperature not exceed 170°C.电芯或电池的最高表面温度应不超过 170°C 2 No disassembly, no fire within six hours of this test 试验结束后 6 个小时之内，电芯和聚合物电芯应无解体和无着火现象发生	The samples c1#~c5#: no disassembly and no fire/ 编号为 c1#~c5#的样品：无解体、无着火现象 The data see table2/数据见表 2	



Table1: T1~T5 / 表 1. 试验 1~试验 5											
Sample No. 样品号	Mass prior to test / 试验前质量 (kg)	OCV prior to test / 试验前电压(V)	Test 1: Altitude simulation/ 测试 1: 高度模拟		Test 2: Thermal test/ 测试 2: 热冲击		Test 3: Vibration/ 测试 3: 振动		Test 4: Shock/ 测试 4: 冲击		Test 5: External Short Circuit/测试 5 外接短路
			Mass loss(%) 质量损失(%)	Change ratio 电压比(%)	Mass loss(%) 质量损失(%)	Change ratio 电压比(%)	Mass loss(%) 质量损失(%)	Change ratio 电压比(%)	Mass loss(%) 质量损失(%)	Change ratio 电压比(%)	Temp. (°C) 温度 (°C)
b1#	17,780	13,671	0,000	99,96	0,000	97,90	0,000	100,00	0,000	99,98	65,9
b2#	17,660	13,634	0,000	99,87	0,000	98,13	0,000	99,99	0,000	99,99	64,3
b3#	17,760	13,589	0,000	99,96	0,000	98,37	0,000	99,99	0,000	100,00	65,2
b4#	17,750	13,656	0,000	99,77	0,000	98,14	0,000	100,00	0,000	99,97	67,8

Table2: Crush / 表 2: 挤压						
<b>Test 6: Crush/测试 6: 挤压</b>	Sample No. 样品号	c1#	c2#	c3#	c4#	c5#
	OCV prior to test / 试验前电压 (V)	2,934	2,930	2,926	2,934	2,936
	Temp. (°C) 温度 (°C)	25,8	26,3	25,4	27,3	26,2

Table3: Overcharge Test of batteries/ 表 3 电池过充试验						
<b>Test 7: Overcharge /测试 7: 过充电</b>	Sample No. 样品号	b1#	b2#	b3#	b4#	
	OCV prior to test /试验前电压 (V)	13,375	13,360	13,360	13,364	

Table 4: Forced discharge / 表 4. 强制放电											
<b>Test 8: Forced discharge / 测试 8: 强 制放电</b>	Sample No. 样品号	c6#	c7#	c8#	c9#	c10#	c11#	c12#	c13#	c14#	c15#
	OCV prior to test / 试验前电压(V)	2,845	2,843	2,840	2,845	2,852	2,839	2,841	2,842	2,846	2,829
	Sample No. 样品号	c16#	c17#	c18#	c19#	c20#	c21#	c22#	c23#	c24#	c25#
	OCV prior to test / 试验前电压(V)	2,840	2,838	2,843	2,842	2,840	2,847	2,844	2,839	2,842	2,845

## 注 意 事 项

### Important

1. 本报告无检测单位印章、骑封章无效。  
The test report is invalid without the official stamp of CVC and Paging seal of CVC.
2. 未经本试验室书面同意，不得部分地复制本报告。  
Nobody is allowed to photocopy or partly photocopy this test report without written permission of CVC.
3. 本报告无批准人、审核人及鉴定人签名无效。  
The test report is invalid without the signatures of Ratifier, Reviewer and Testing engineer.
4. 本报告涂改无效。  
The test report is invalid if altered,
5. 对检测报告若有异议，应于收到报告之日起十五天内向检测单位提出。  
Objections to the test report must be submitted to CVC within 15 days,
6. 本报告仅对送检样品负责。  
The test report is valid for the tested samples only.
7. 判定栏中“-”表示“不需要判定”，“P”表示“通过”，“F”表示“不通过”，“N/A”表示“不适用”。  
As for the Verdict, “-” means “no need for judgement”, “P” means “pass”, “F” means “fail” and “N/A” means “not applicable”.

地 址：中国 广州市科学城开泰大道天泰一路 3 号

Address: No.3,Tiantaiyi Road,Kaitai Avenue,Science City,Guangzhou P. R. China.

电 话(Tel): 020 32293888

传 真(FAX): 020 32293889

邮政编码(Post Code): 510663

E-mail: office@cvc.org.cn

<http://www.cvc.org.cn>